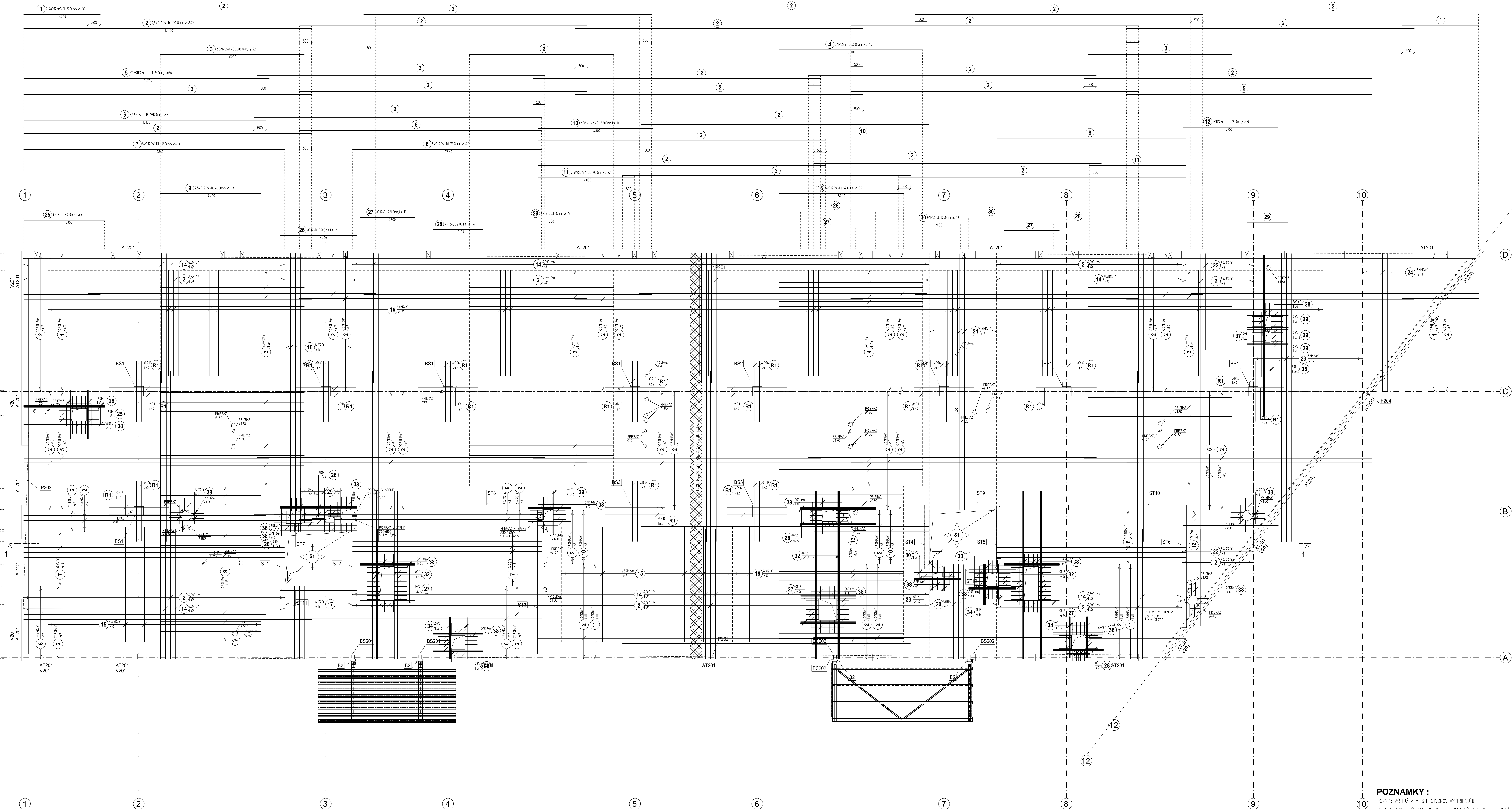
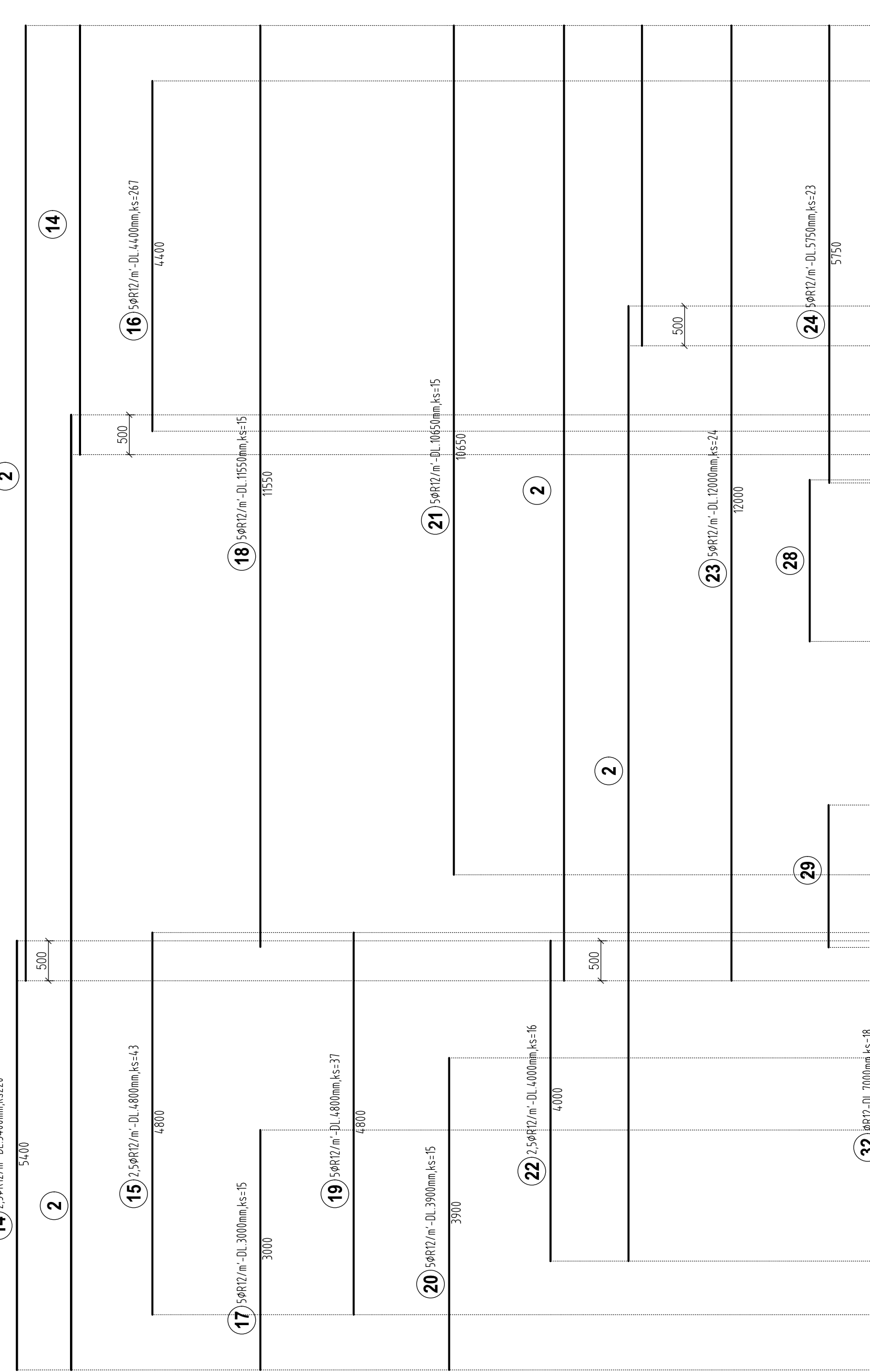


Technical drawing showing three views of a mechanical part:

- Top View:** A rectangular plate with overall dimensions 80x60 mm. It features a central circular hole with a diameter of 10 mm. Two smaller circular holes, each with a diameter of 10 mm, are located on the left and right sides, spaced 20 mm apart from each other and from the nearest edges.
- Front View:** Shows the vertical profile. The total height is 10 mm. The central portion has a height of 6 mm, while the two side portions have a height of 2 mm each.
- Side View:** Shows the horizontal profile. The total width is 60 mm. The central portion has a width of 10 mm, and the two side portions have a width of 25 mm each.

[illegible]

POUŽITÉ MATERIÁLY :

BETÓN EN206-1 - C25/30 - XC1 (SK) - CI 0.4 - Dmax 16mm - S3
VÝSTUŽ S500B
ZVÁRANÁ SIEŤ BST 500 M
OCEL S235 MPa

[illegible]